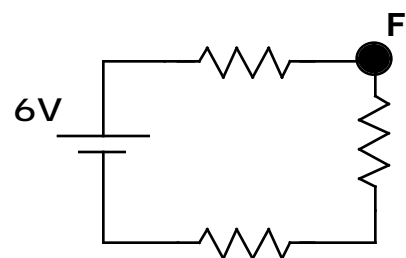
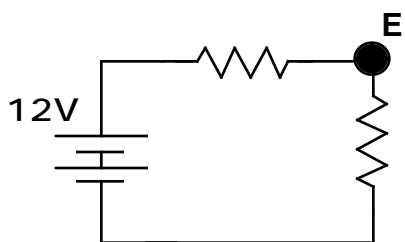
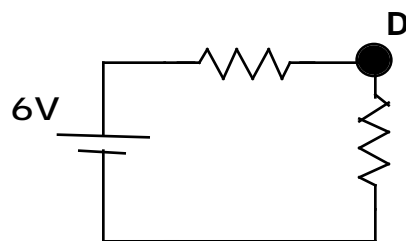
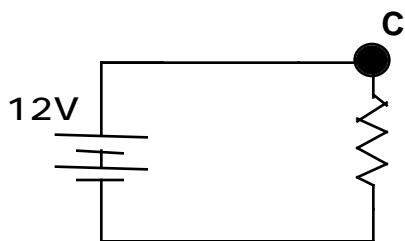
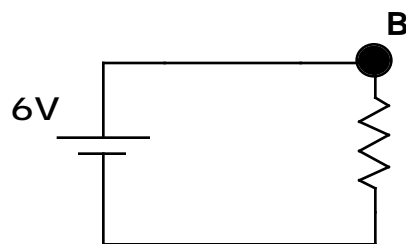
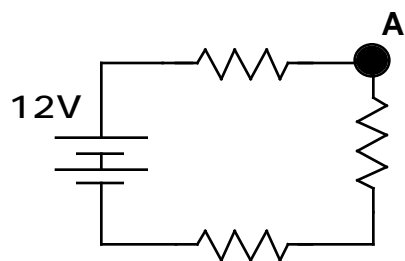


Simple Resistor Circuits—Current ¹⁶⁶

All the resistors in the circuits below are identical at 2Ω each. The batteries are ideal with voltages of 6 or 12 volts as shown below. All connecting wires have negligible resistance. Rank the current passing through the upper right hand corner of each circuit from greatest to least.



Greatest 1 _____ 2 _____ 3 _____ 4 _____ 5 _____ 6 _____ Least

Or, the current is the same in each situation. _____

Please carefully explain your reasoning.

How sure were you of your ranking? (circle one)

Basically Guessed

Sure

Very Sure

1 2 3 4 5 6 7 8 9 10

¹⁶⁶ C. Hill, C. Lam, M. Mann