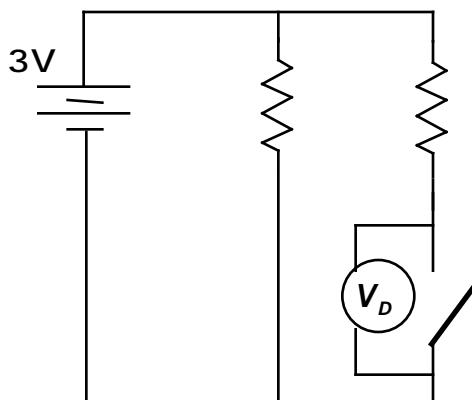
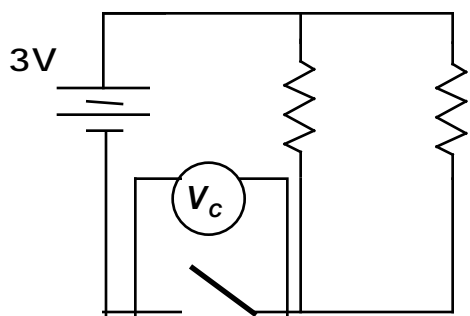
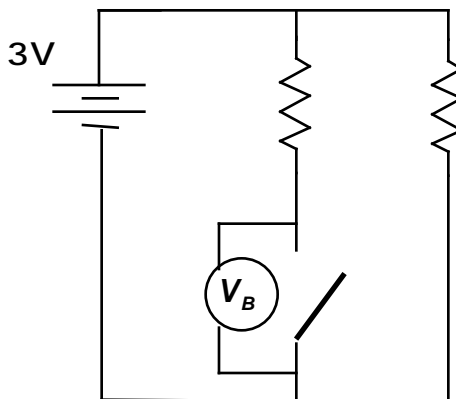
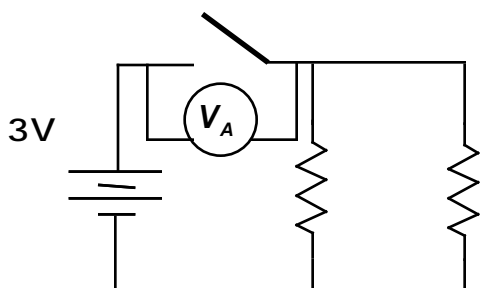


Parallel Circuits—Voltmeter Readings Across Open Switches II ¹⁷¹

All resistors shown are identical in the circuits below. The switches in each case are open. Rank the voltmeter readings from highest to lowest.



Highest 1 _____ 2 _____ 3 _____ 4 _____ Lowest

Or, all readings are zero. _____

Or, all readings are 3 V. _____

Or, not enough information is given to be able to rank these readings. _____

Please carefully explain your reasoning.

How sure were you of your ranking? (circle one)

Basically Guessed

Sure

Very Sure

1 2 3 4 5 6 7 8 9 10