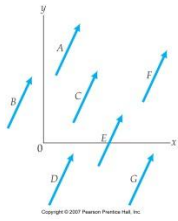


Name _____ Date _____ Period _____

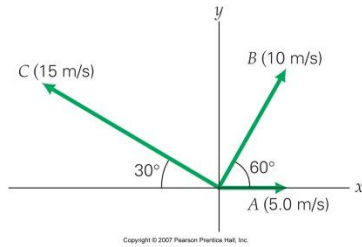
1. Are any of the vectors in the figure below equal?



2. A vector has an x -component of -2.5 m and a y -component of 4.2 m. Express the vector in magnitude–angle form.

3. During a takeoff (in still air), an airplane moves at a speed of 120 mi/h at an angle of 20° above the ground. What is the horizontal speed of the plane?

4. For the vectors shown in the figure below, determine $\vec{A} + \vec{B} + \vec{C}$.



5. A person walks from point A to point B as shown. What is the person's displacement relative to point A?

